

**General Notes**

- SEE CIVIL DRAWINGS FOR GRADING, DRAINAGE, PAVING, AND SITE UTILITIES.
- SEE LANDSCAPE DRAWINGS FOR SITE CONSTRUCTION, PLAY EQUIPMENT, LANDSCAPING, AND IRRIGATION.

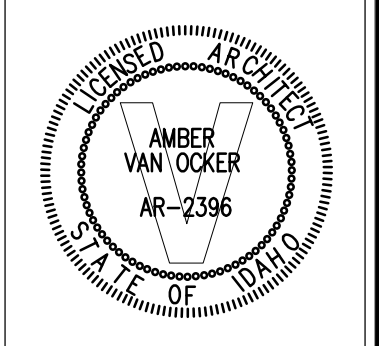
**Reference Notes**

- (A) EXISTING ASPHALT PAVING TO REMAIN.
- (B) EXISTING CONCRETE PAVING TO REMAIN.
- (C) EXISTING CONCRETE WALL TO REMAIN.
- (D) EXISTING FENCE TO REMAIN.

**Legend**

- BUILDING ADDITION / NEW CONSTRUCTION.
- NEW ASPHALT / CONCRETE PAVING. SEE CIVIL.
- LIMITS OF SITE CONSTRUCTION.

**LKV ARCHITECTS**  
 2400 E RIVERWALK DRIVE  
 BOISE, IDAHO 83706  
 WWW.LKVARCHITECTS.COM  
 208.336.3443



**Jefferson Elementary School  
 Addition and Remodel**  
 600 N. Fillmore Street, Jerome, Idaho

DATE: December 15, 2022  
 LKV PROJECT #: -  
 REVISIONS:

DRAWN BY: MS  
 CHECKED BY: WT

Conceptual Design

DRAWING NO.  
**SD-1.1**

**Site Plan**  
 Scale: 1" = 30'-0"